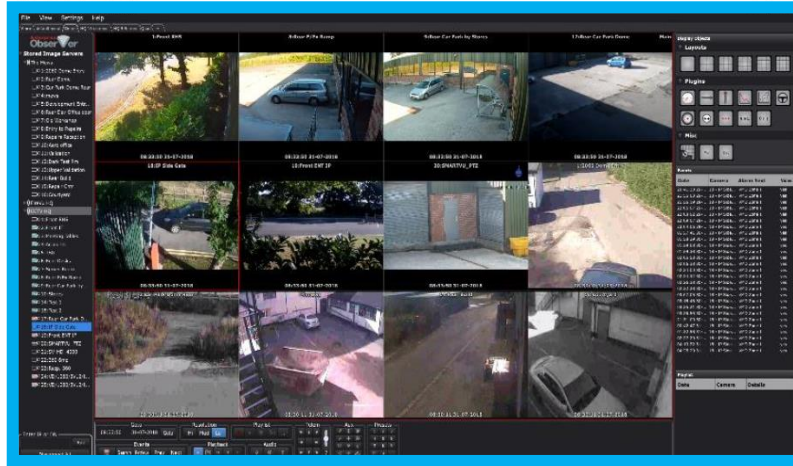


ENTERPRISE OBSERVER VIDEO MANAGEMENT SOFTWARE



In the same way the NetVu's Uniplex range is the one Network Video Recorder for all your needs Enterprise Observer is the one Video Management Software for every need. It can be used as a simple viewer or a full building management and control system, making it a highly cost-effective solution.

WHY NETVU?

- ✓ NetVu Connected™ streaming protocols ensure no loss of video evidence.
- ✓ Video Partition (PAR) File™ format for multi-camera synchronised playback and long storage media life.
- ✓ Closed IP™ hardened management layer provides the highest levels of cyber security.
- ✓ MultiMode™ recording reduces storage needs while maintaining very high recording quality.
- ✓ Simple data capture, recording and presentation from EPOS, Electronic Access Control and Building Management Systems, coherently displayed with video pictures.
- ✓ NetVu PowerScripts™ for quick and easy integration and customised applications.
- ✓ Cloud-based configuration and remote support available.

KEY FEATURES

- User-definable screen layouts.
- Multiple simultaneous screen layouts selected by tab.
- Advanced Activity and Event Search.
- Supports 360° cameras with image de-warping, stored pre-set positions and multiple concurrent views from the same camera.
- User Playlists for simplified video evidence production.
- User-definable dial, graph, gauge and virtual LED display plugins for side-by-side coherent display of video and data.
- GPS Maps for transport applications.
- PowerScripts™ editor and display.
- Import multiple Video Partition (PAR) Files™ for playback at the same time.
- Video export with graphical overlays.

Minimum System Specification	
Operating System	Microsoft Windows 7 to Windows 10.
Processor	Intel i3 Dual Core.
Memory	4GB RAM.
Graphics Capability	OpenGL 2.0 Compatible Graphics Card.

Recommended System Specification & Warranty	
Operating System	Microsoft Windows 7 to Windows 10.
Processor	Intel i5 or i7 Quad Core.
Memory	4GB RAM.
Graphics Capability	Integrated GPU or OpenGL 2.0 Compatible Graphics Card.
Warranty	1 year

FUNCTIONAL MATRIX

Part Number	No. of NVRs	Live/Playback & Export	Dual View	KBC keyboard support	Alarm Receiving	FireVu Support
ENVO/BAS/S	4	✓	✗	✗	✗	✗
ENVO/BAS/M	4	✓	✗	✗	✗	✗
ENVO/STD/S	20	✓	✓	✓	✗	✗
ENVO/STD/M	20	✓	✓	✓	✗	✗
ENVO/PRE/D	Unlimited	✓	✓	✓	✓	✓
ENVO/PRE/S	Unlimited	✓	✓	✓	✓	✓
ENVO/PRE/M	Unlimited	✓	✓	✓	✓	✓

PART NUMBERS

Part Number	Description
ENVO/BAS/S	Basic Level, Single User License
ENVO/BAS/M	Basic Level, Master Site License (Minimum 5 Users)
ENVO/STD/S	Standard Level, Single User License
ENVO/STD/M	Standard Level, Master Site License (Minimum 5 Users)
ENVO/PRE/S	Premium Level, Single User License
ENVO/PRE/M	Premium Level, Master Site License (Minimum 5 Users)

Demonstration Versions available.

Version 1.1 © Copyright NetVu Limited. 21/01/2021. Design and specification subject to change without notice. E. and O.E.