

**Technical Note Description**

This Technical note describes how to install and license Enterprise Observer Software.

**Product Models Covered**

Uniplex series NVRs, Gen 3 (SD and SD Advanced) series DVRs, NetVu IP cameras, FireVu

**How to ..... Install and license Enterprise Observer Software.**

The technical specifications of a personal computer required in order to properly run Enterprise Observer Software are as follows;

Minimum System Requirements	
Operating System	Microsoft Windows 7 to Windows 10.
Processor	Intel i3 dual core.
Memory	4GB RAM.
Graphics Capability	OpenGL 2.0 compatible graphics card.
Recommended System	
Operating System	Microsoft Windows 7 to Windows 10.
Processor	Intel i5 or i7 quad core.
Memory	4GB RAM.
Graphics Capability	integrated GPU or an OpenGL 2.0 compatible graphics card.

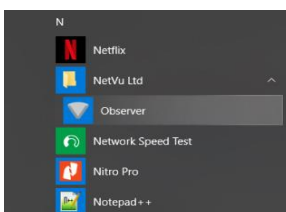
Enterprise Observer Software may be obtained from NetVu Ltd as a download or on physical media. For more information contact NetVu Ltd at [sales@netvu.org.uk](mailto:sales@netvu.org.uk) or telephone +44 1928 706400.

The Enterprise Observer software file is a single executable file – EnterpriseObserver.exe

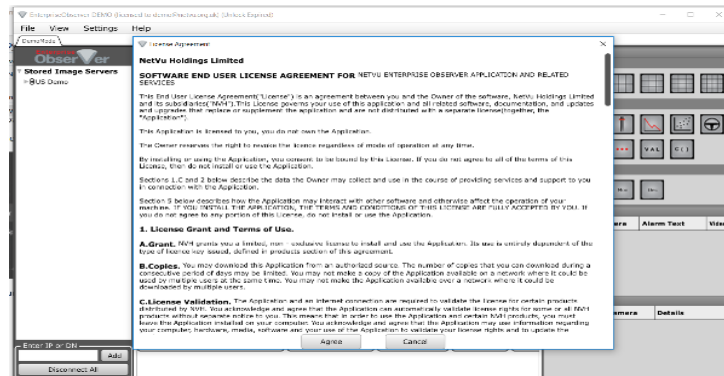
To install the Enterprise Observer Software, copy the executable file onto the hard drive of your PC and run it by double-clicking on its icon or through the use of the Windows Run command.

Follow any instructions during the installation.

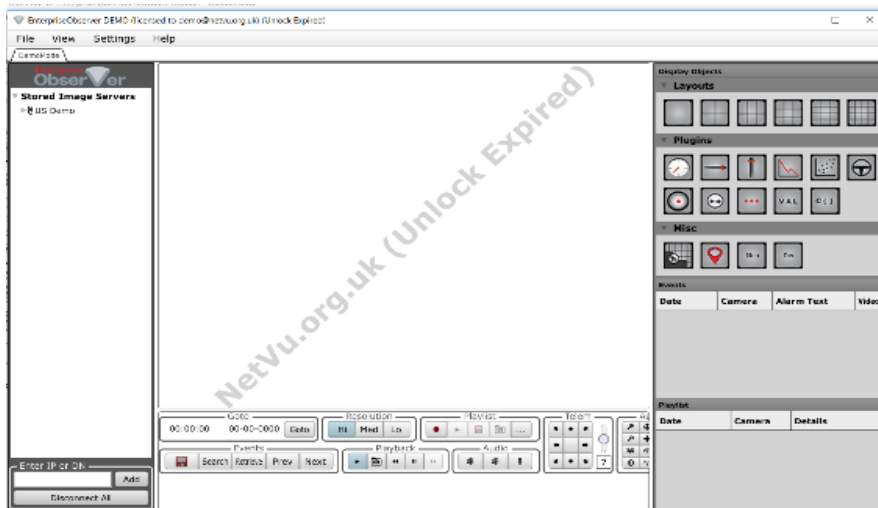
After Installation has completed you will find the software with the rest of your programs, under NetVu Ltd.



Click on Observer to run the software. The first time that it runs you will see a screen like this;



Click on Agree to access the basic program window.



You will notice that it says "unlock expired". Now you need to unlock the software.

Various levels of software license are available for Enterprise Observer Software, and these may be unlocked at any time. The license levels available are as follows;

License level	Suggested applications
Basic	Viewing, playback, telemetry control and download of video from 4 DVRs and performance data review
Standard	Viewing, playback, telemetry control and download of video from 20 DVRs, KBC2/U control and Maps, also performance data review
Premium	All the features of the basic and standard versions plus: integrated basic alarm receiving package. Unlimited DVRs Transport applications FireVu applications.
Modular features	For the integrator whom wishes to develop deeply integrated systems which may require programming of conditional events, video wall control and also alarm receiving centre use

These license levels are available both as single user and as multi-user site licenses. The part numbers of the available versions are as follows

ENVO/BAS/S	Basic single user	
ENVO/BAS/M	Basic master site licence	
ENVO/STD/S	Standard single user	
ENVO/STD/M	Standard master site licence	
ENVO/PRE/D	Premium fully featured time expired demo	
ENVO/PRE/S	Premium single user	
ENVO/PRE/M	Premium master site licence	

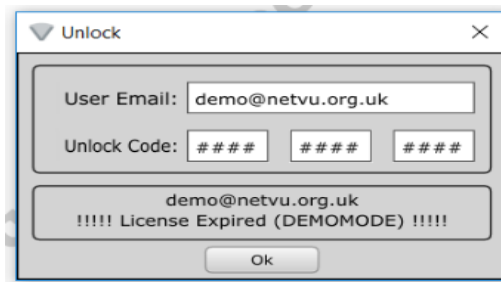
Enterprise ObserVer Software Licenses may be obtained from NetVu Ltd. For more information contact NetVu Ltd at sales@netvu.org.uk or telephone +44 1928 706400.

A time-limited demonstration license is also available to help you evaluate the software. To obtain a demo version of the software complete the form here:

<https://netvu.org.uk/enterprise-observer-request-form/>

Software licenses for Enterprise ObserVer Software are obtained in the form of an email address (normally an email address of the installer or end user) which is supplied to NetVu Ltd in order to generate an unlock code. The email address and the unlock code are then used together to license the software for operation.

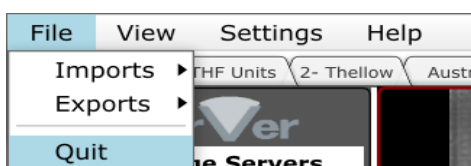
To apply the software licence, click on "Help" in the top left-hand corner of the Software and then click on "Unlock". The window shown below will appear;



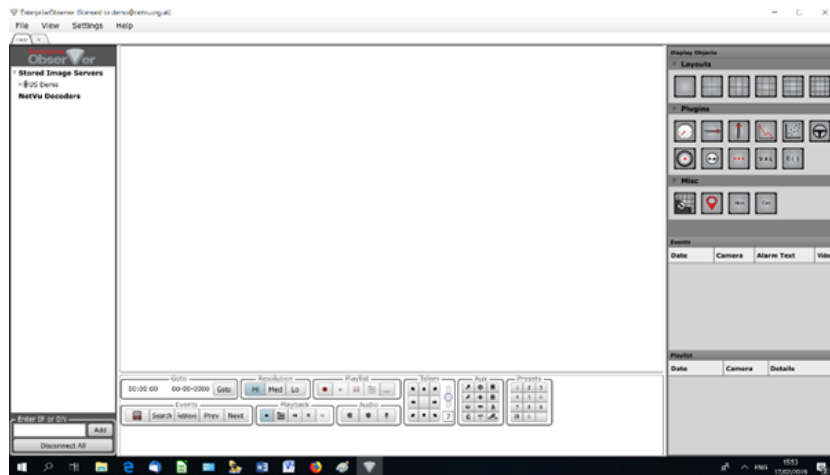
First, enter the email address associated with the unlock code in the User Email Field. Then, enter the Unlock Code supplied by NetVu Ltd into the Unlock Code Field.

Finally, click on OK. The software will say that a restart is needed.

To restart the software, click on "File" in the top left-hand corner of the software and then click on "Quit" to close the software.



When you run the software again you will get a window that looks like this;



The software is now fully installed and licensed and you are now ready to start using the software.

A detailed User Manual for Enterprise Observer Software and various quick-start guides are available for download at <http://NetVu.org.uk>