

Technical Note 0008

Released 12/Jul/2021

Technical Note Description

This Technical note describes how to enable activity based (MultiMode) recording of cameras in the Uniplex NVR.

Product Models Covered

Uniplex series NVRs

How to enable activity based (MultiMode) recording of cameras in the Uniplex NVR.

The most efficient use of Hard disk storage space can be achieved by setting up activity based (MultiMode) recording of cameras. Like all NetVu recorders and cameras when used together the Uniplex is capable of switching from a low frame-rate lower resolution recording when no activity is happening in front of a camera, to high quality, high frame rate recording the moment that activity is detected. The switch is instant, with no loss of data.

To enable MultiMode recording of cameras on the Uniplex NVR take the following steps.

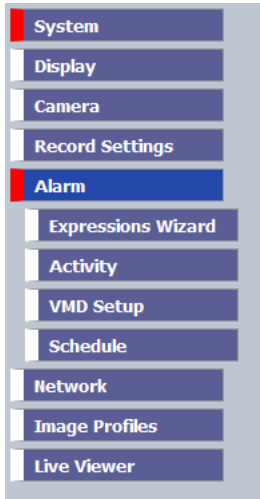
Use your browser (Firefox or similar browser) to view the system web page of the Uniplex NVR.



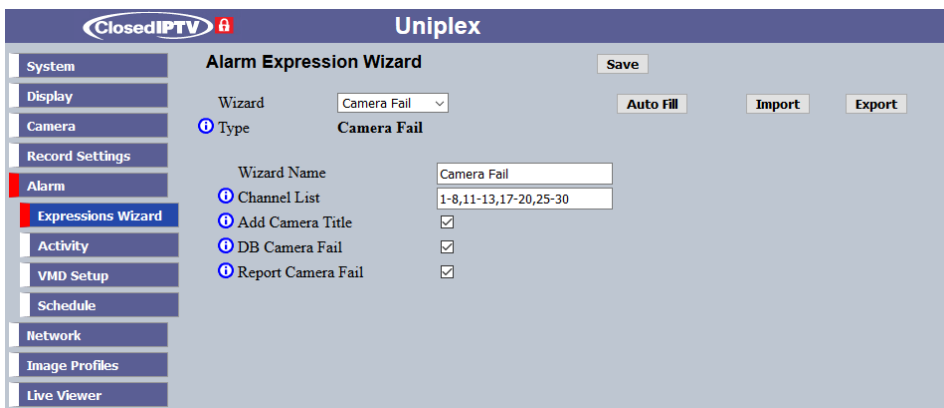
NetVu Ltd reserve the right to alter this document without prior notice.

Technical Note 0008

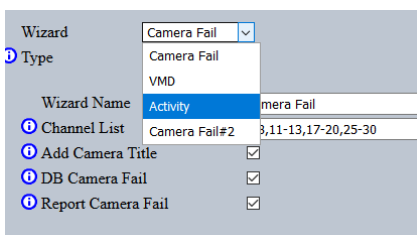
Click on the **Alarm** menu button, and then click on the **Expressions Wizard** sub-menu button.



The following web page will then appear:

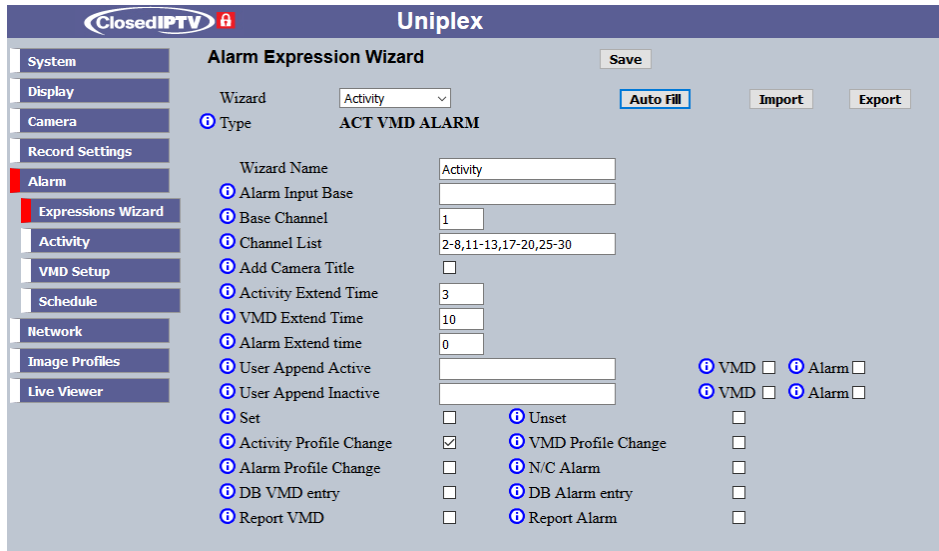


Click on the drop-down arrow on the right-hand side of the **Wizard** field. Then select **Activity** by clicking on it.



NetVu Ltd reserve the right to alter this document without prior notice.

The following web page opens:



The screenshot shows the 'Alarm Expression Wizard' configuration page in the Uniplex interface. The wizard is set to 'Activity' type. The configuration includes fields for Wizard Name (Activity), Alarm Input Base, Base Channel (1), Channel List (2-8,11-13,17-20,25-30), Activity Extend Time (3), VMD Extend Time (10), and Alarm Extend time (0). There are also checkboxes for various actions such as VMD, Alarm, Unset, VMD Profile Change, N/C Alarm, DB Alarm entry, and Report Alarm.

This page is used to configure the way that the Uniplex will respond to triggers from a variety of sources. These triggers include:

- Activity Detection events
- Video Motion Detection events
- Physical Alarm Input activation – local alarm inputs on the Uniplex and remote (modbus) alarm inputs
- Camera Failure

With the exception of camera failure, if these triggers are momentary they can be extended in their active period by a number of seconds so that any response by the Uniplex can immediately take action to capture the event in detail.

The Alarm Expression Wizard page also determines what actions are taken by the Uniplex in response to the activation of the triggers described above. The actions which can be taken by the Uniplex include:

- Changing the recording profile used while the trigger is active so that, for example, the Uniplex records in high quality while the trigger is active
- Creating a database entry such that the event appears in the history logs of the Uniplex, allowing the logs to be searched by event so that video recordings

NetVu Ltd reserve the right to alter this document without prior notice.

Technical Note 0008

associated with the event can be found quickly.

- Reporting the event to a remote video receiving centre RVRC*
- Sending a PTZ camera to a specific preset position*
- Operating a relay output (local to the Uniplex or remotely, on a modbus module)*
- Playing an audio file through the audio output of the Uniplex*
- Protecting a period of recording of a specific camera for a number of days*
- Running a PowerScript program located on the Uniplex

* Depending on software version of the Uniplex

The controls available on this page are as follows :

Wizard: Selects an existing Alarm Wizard so that it can be edited. Choose the alarm wizard from the drop-down list

Type: Selects the type of Alarm Wizard. Choose “ACT VMD ALARM” for an activity detection, video motion detection (VMD) or alarm input wizard. Choose “Camera Fail” for the camera failure wizard

Wizard Name: Enter or edit a descriptive name for the alarm wizard.

Alarm Input Base: Enter or edit the type of trigger to be used by the alarm wizard. The list of usable triggers (keywords) is available on the Alarm Expression Keyword page. To view this page click on System – Status – About – Alarm Keywords – View. Single region events, multi region events and variables can be viewed using the drop-down list.

Base Channel: Where the trigger type is an alarm input this field sets the starting number from which the wizard will begin

Channel List: for activity detection and video motion detection (VMD) triggers this field contains the channel numbers which will be processed by the wizard. This field can be automatically populated with channel numbers where no wizard is currently set by clicking on the Auto Fill button. In this way activity detection for multiple cameras/alarm inputs can be set up simultaneously using the wizard.

Add Camera Title: If ticked, will add the camera name to any database entry action

NetVu Ltd reserve the right to alter this document without prior notice.

Technical Note 0008

configured by the wizard.

Activity Extend Time: Used with the Activity Detection Trigger. Extends any momentary activity detected to the time in seconds entered in to this box.

VMD Extend Time: Used with the VMD Trigger. Extends any momentary VMD event to the time in seconds entered in to this box.

Alarm Extend Time: Used with the Alarm Input Trigger. Extends any momentary alarm event detected to the time in seconds entered in to this box.

User Append Active: A freeform list for appending actions on expression active. Tick on the box VMD to add Active Append Strings to VMD Expressions. Tick on the box Alarm to add Active Append Strings to Alarm Expressions.

User Append Inactive: A freeform list for appending actions on expression inactive. Tick on the box VMD to add Inactive Append Strings to VMD Expressions. Tick on the box Alarm to add Inactive Append Strings to Alarm Expressions.

Set: If ticked, actions will be taken if the Uniplex is in SET mode (can be controlled using Alarm input 19, an SIA Alarm Panel or some other input).

Unset: If ticked, actions will be taken if the Uniplex is in UNSET mode (can be controlled using Alarm input 19, an SIA Alarm Panel or some other input).

Activity Profile Change: If ticked, activity detection will change the recording profile from NORMAL to EVENT while activity detection event is active and then back to NORMAL when the event ends.

VMD Profile Change: If ticked, VMD will change the recording profile from NORMAL to EVENT while the VMD event is active and then back to NORMAL when the event ends.

Alarm Profile Change: If ticked, an alarm event will change the recording profile from NORMAL to EVENT while the alarm event is active and then back to NORMAL when the event ends.

N/C Alarm: Used with Alarm Input events. The factory default for Uniplex alarm inputs is normally open, closing on alarm. Ticking the N/C Alarm box reverse the sense of the alarms configured by this wizard to normally closed, opening on alarm.

DB VMD Entry: If ticked a VMD event will create a database entry, allowing the event to be found by event searches of Enterprise Observer and Pick-a-Point Software.

Technical Note 0008

DB Alarm Entry: If ticked an Alarm Input event will create a database entry, allowing the event to be found by event searches of Enterprise Observer and Pick-a-Point Software.

Report VMD: If ticked a VMD event will be reported to an RVRC.

Report Alarm: If ticked a Alarm event will be reported to an RVRC.

Enabling activity-based (MultiMode) recording:

As can be seen from the above description, this page can be used to enable many different behaviours of the Uniplex. Enabling MultiMode recording is just one possible activity

To enable MultiMode recording, enter the numbers of the cameras which are to record using MultiMode into the **Channel List** field. You can separate the channel numbers by a comma or enter a range of numbers by entering the starting cameras and the ending camera separated by a hyphen. For example, to add all possible cameras you could enter 1-64.

Alternatively, to add all of the cameras which are currently detected by the NVR you can simply click on the **Auto Fill** button.

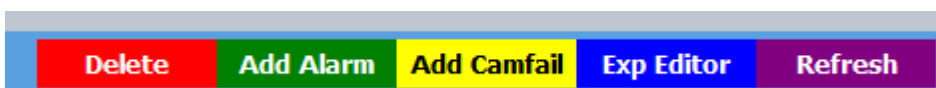
You should also note that the **Activity Profile Change** box is ticked

<input checked="" type="checkbox"/> Activity Profile Change	<input type="checkbox"/> VMD Profile Change
<input type="checkbox"/> Alarm Profile Change	<input type="checkbox"/> N/C Alarm

A tick in this box means that when movement (activity) is sensed in front of any of the selected cameras, the recording profile will change, from Normal to Event

When the cameras are entered simply click on the Save button to enable the cameras for MultiMode recording.

You can check that the cameras are enabled for MultiMode recording by clicking on the **Exp Editor** button at the bottom of the page



In the web page that appears there should be one line of the following type for each of the

NetVu Ltd reserve the right to alter this document without prior notice.

Technical Note 0008

cameras enabled:



You have now enabled activity based (MultiMode) recording on all of the cameras selected.

Note: If additional Alarm Expression wizards are created then the VMD Profile Change and Alarm Profile Change boxes should be ticked as well

 Activity Profile Change	<input checked="" type="checkbox"/>	 VMD Profile Change	<input checked="" type="checkbox"/>
 Alarm Profile Change	<input checked="" type="checkbox"/>	 N/C Alarm	<input type="checkbox"/>