

**Technical Note Description**

This Technical note describes how to convert video PAR files to AVI files Using Enterprise Observer software.

**Product Models Covered**

All supported Dedicated Micros and NetVu DVR/NVR. Enterprise Observer software.

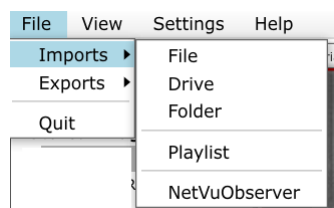
**How to ..... view recordings exported from Dedicated Micros and NetVu DVRs using Enterprise Observer software.**

Before using the following instructions, you must install and license Enterprise Observer software on your PC.

From time to time, it may be required to view recordings which have been exported from Dedicated Micros or NetVu branded DVRs or NVRs.

In addition to downloading and exporting video recordings Enterprise Observer Software may be used to import previously downloaded video recordings so that they may be reviewed once more.

To import video recordings, click on "File" in the menu and then Click on "Imports"

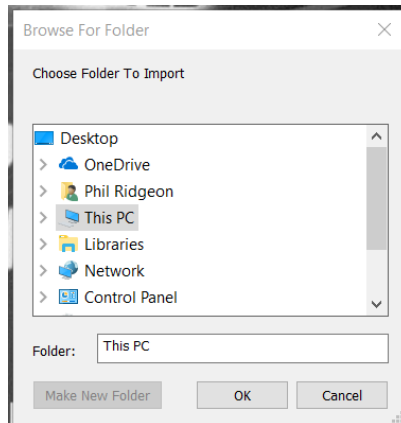


An individual file, folder or complete drive may be imported. Click on "File", "Drive" or "Folder" and a Browser Window will appear.

Files which have been download from a Dedicated Micros or NetVu DVR/NVR will have a .PAR file extension, for example VID00265.PAR

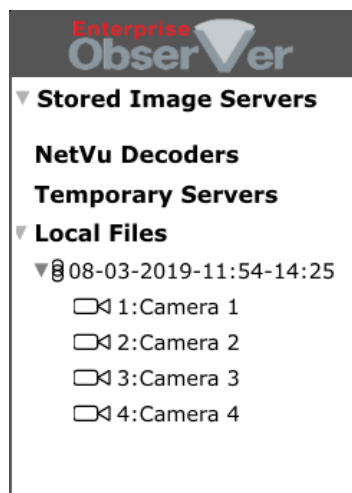
This is the only type of file supported by Enterprise Observer software. Other file types such as MPEG, AVI etc are not supported and you cannot playback files of that type.

**Technical Note 0017**



Select the .PAR files to be imported and then click on OK.

The files imported will then appear under “Local Files” in the Server tree.



Click on the down arrow to the left of the date and time and the cameras included in the download will be displayed.

You can then play back the recordings of the cameras by clicking on them or dragging and dropping them on to the video window.

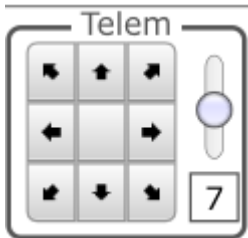
Multiple recordings can be played back simultaneously.

## Technical Note 0017

The recordings will start to play back automatically.

You can zoom in and out of the image using the scroll wheel on your mouse.

You can move around a zoomed image by clicking on the arrows in the **Telem** control box.



The following controls may be used to review the recording.



Clicking on the double left arrow will reverse play the recording of the camera displayed / selected.

If you click the double arrow repeatedly the speed of rewind will increase for each click. The playback control panel changes to:



You can click on the single arrow to play the recording forward at normal speed ( 1 second = 1 second ) or click on the right double arrow to fast forward the playback. Multiple clicks on the fast-forward button will speed up the fast forward.

Clicking on the play button (single right arrow) plays the recording at normal speed. The Playback controls change to:

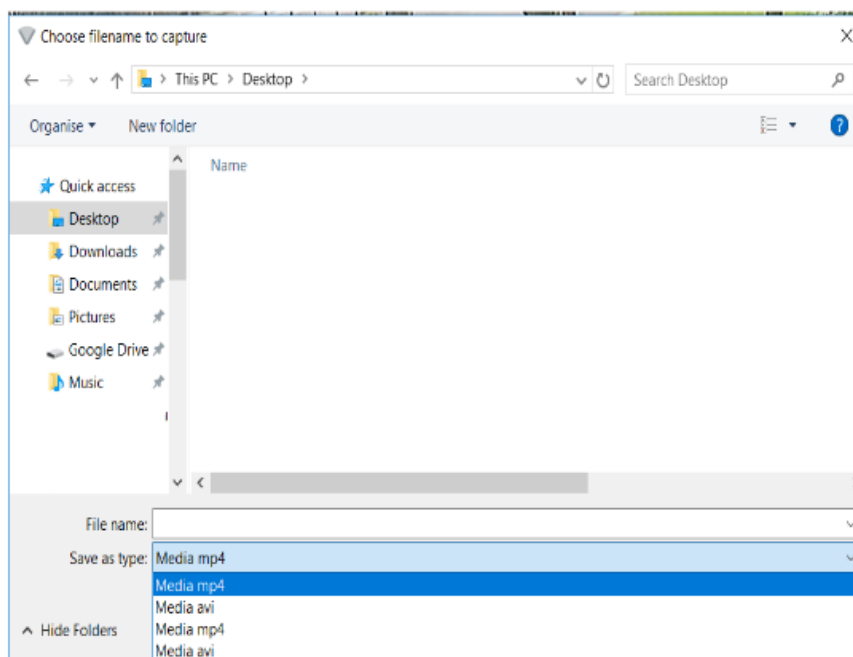


## **Technical Note 0017**

Clicking on the Pause button (double lines) will pause playback. Clicking on a double arrow while paused will step the playback one image forwards or backwards, depending on which double arrow is pressed.

Clicking on the folder symbol in the playback controls will allow you to capture the playback that you are watching and save it as an MP4 or AVI file.

To do this, pause playback at the start of the section to be captured, by clicking on the pause button. Then, click on the folder symbol in the playback controls. The following window will appear.



Choose the name of the file to be stored and the location where it will be saved. Also select the type of file, MP4 or AVI.

Click on "SAVE" and then start playback to start recording into the file.

To end the capture pause playback once more and then click a second time on the folder symbol. The file with the recording will then be immediately available at the stored location.

For additional information on the use of Enterprise Observer software please see the Enterprise Observer User Manual, available for download at <https://netvu.org.uk/manuals/>

NetVu Ltd reserve the right to alter this document without prior notice.