

## Technical Note 0005

Released 12/Jul/2021

### Technical Note Description

This Technical note describes how to view the web pages of cameras connected to a Uniplex NVR using the Uniplex NVR browser interface

### Product Models Covered

Uniplex series NVRs

### How to .....view the web pages of cameras connected to a Uniplex NVR using the Uniplex NVR browser interface.

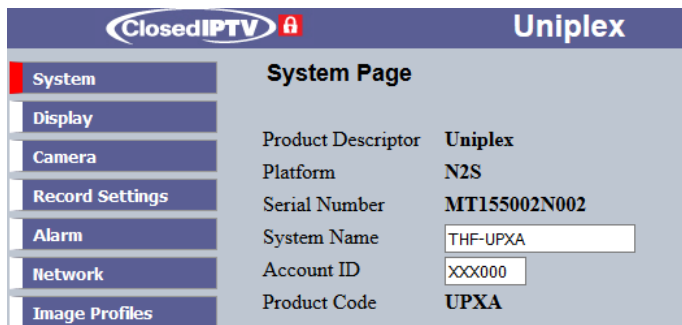
Use your browser (Firefox or similar browser) to view the web page of the Uniplex NVR.



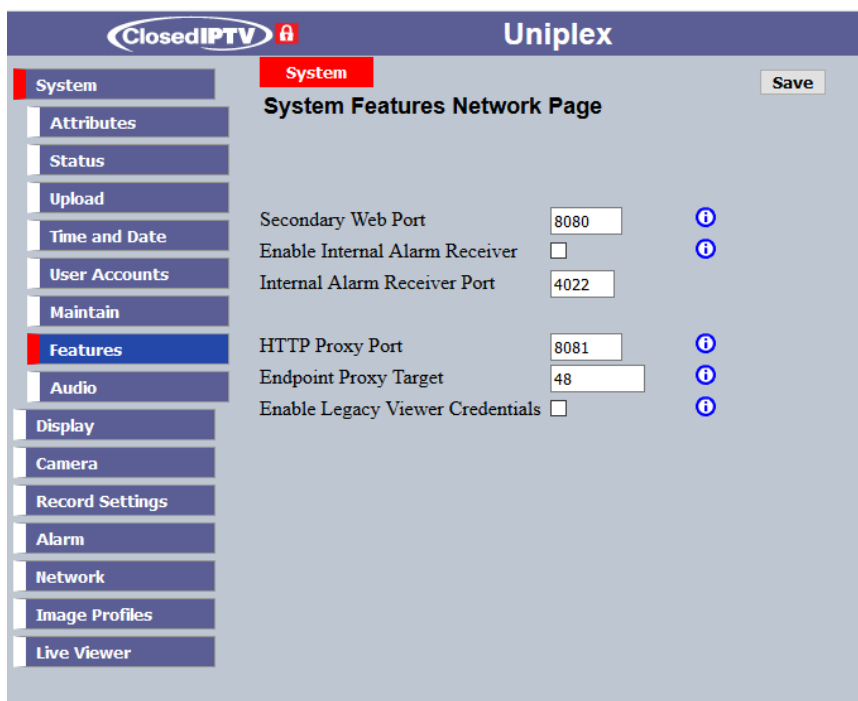
Click on the **System** Button.

NetVu Ltd reserve the right to alter this document without prior notice.

**Technical Note 0005**



Then click on the **Features** Button.



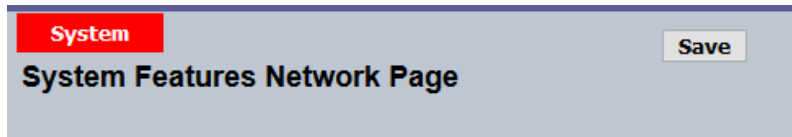
In the field Endpoint Proxy Target type the number of the camera (1 - 64) of which you wish to see the web pages.

For example, if you wish to see the web pages of camera number 1 then enter "1" into this field.

NetVu Ltd reserve the right to alter this document without prior notice.

## Technical Note 0005

Then click on the save button at the top right-hand side of the page.



To view the camera web pages now enter the IP address of the Uniplex NVR in to the URL window of your browser followed by a colon, followed by the number of the camera, followed by the proxy port number (8081) and then press ENTER.

For example, if the Uniplex NVR has an IP address of 192.168.1.1 enter the following in to the URL window of your browser:

192.168.1.1:8081

and then press ENTER

The Configuration username and password of the NVR are used to protect access to the cameras. You will need to enter the username and password to access the camera web pages.

The camera overview web page will then open.

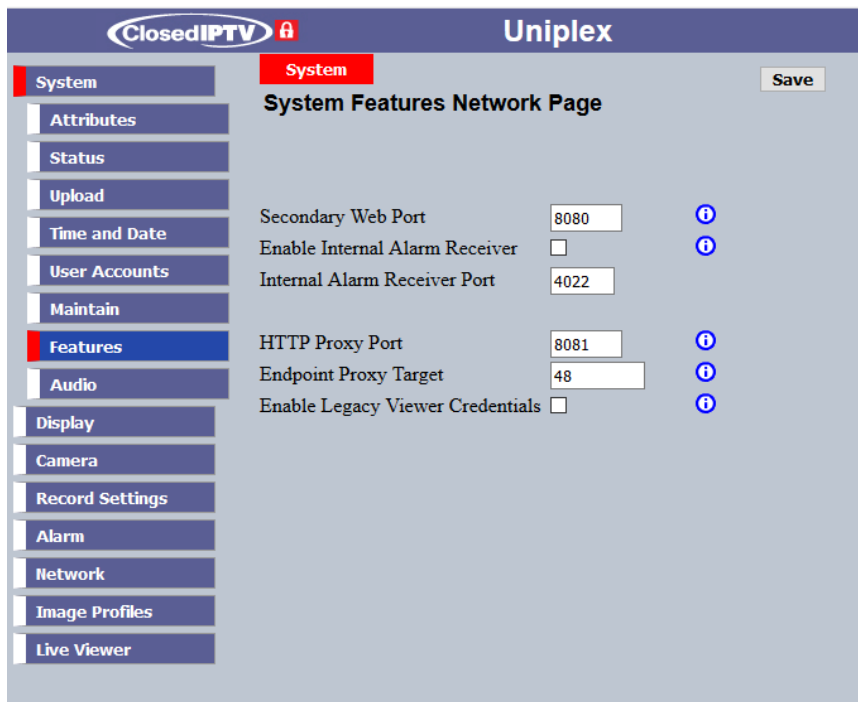


You are now able to view live images from the camera and to make changes to its configuration, using it's webpages.

When you are finished you should return to the Features page of the NVR.

NetVu Ltd reserve the right to alter this document without prior notice.

**Technical Note 0005**



Enter a blank into the Endpoint Proxy Target field, replacing the camera number. This closes the 8081 port and prevents the camera from cyber attack via password attack.